

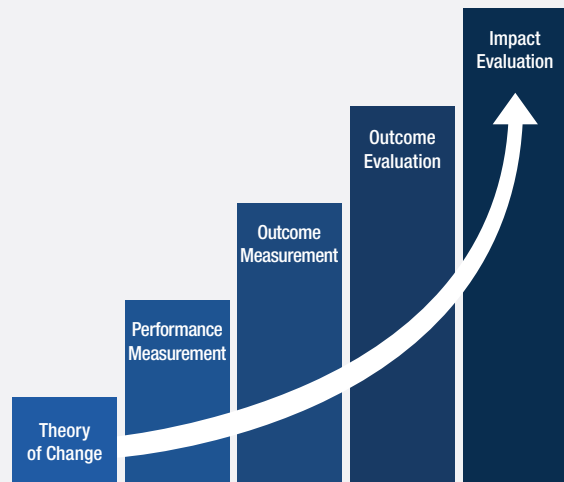
# Office of Research and Evaluation

The Office of Research and Evaluation (ORE) furthers the AmeriCorps mission by producing accurate and timely research on national service, social innovation, volunteering, and civic engagement. We conduct original and sponsored research and evaluations, support evaluations of grantees' research and programs, and promote evidence-based service models – all of which infuse data into AmeriCorps programs and contribute to the public's understanding of national service. Our efforts widely impact AmeriCorps activities across the board by contributing to the four major mission areas listed below.

## 1 Supporting AmeriCorps Programs and Advancing Scholarship

ORE assists AmeriCorps in advancing its programs by conducting firsthand research and supporting grantee evaluations that follow the evidence continuum. ORE also provides research grants to institutions of higher education to advance the cumulative body of evidence on civic engagement, volunteering, and national service. This cumulative body of evidence enables AmeriCorps and its grantees to measure the performance of their programs and help them identify areas of improvement. This model features progressive evaluation across every phase of a program's life cycle. For grantees new to program evaluation, ORE provides resources and technical assistance to help them navigate each stage of evaluation and create a thorough plan. This also enables AmeriCorps to support and strengthen its programs.

### Continuum of Evidence



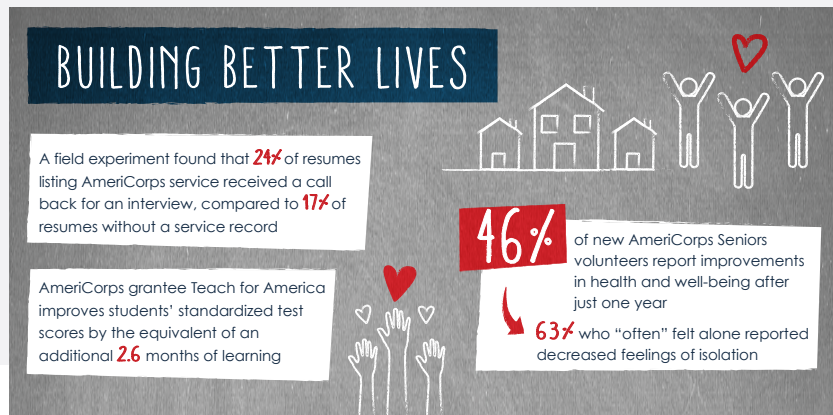
## 2 Identifying National Service Trends

AmeriCorps programs such as VISTA, NCCC, AmeriCorps State & National, and AmeriCorps Seniors rely on an active, engaged member base. AmeriCorps surveys members to inform recruitment and improve member experience. ORE uses the survey responses to identify trends in program membership and member motivations, and to gain a better understanding of members' growth areas and post-service plans. At the same time, ORE also records volunteer efforts statewide to track the civic health of states and local communities, which can inform decisions about which issues to tackle through service and volunteering.

3

## Measuring National Service Impact

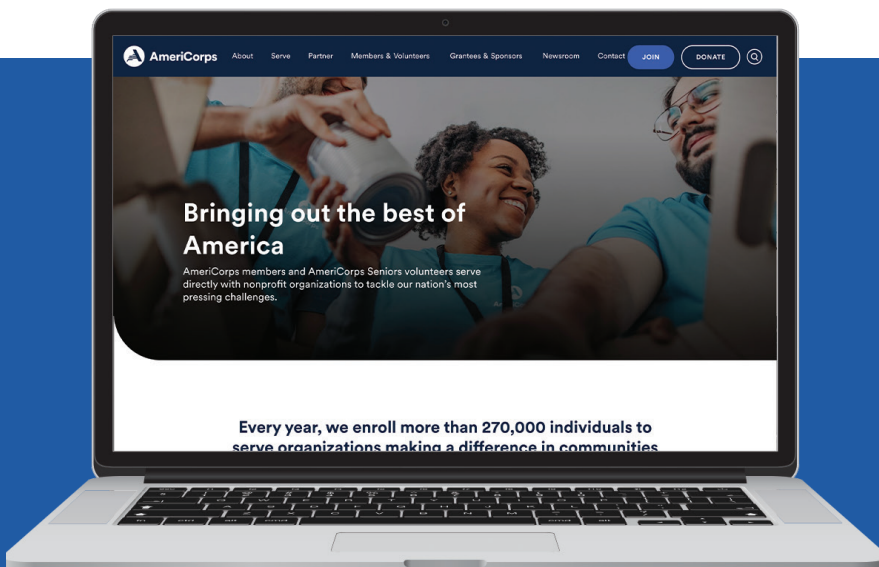
ORE's research and evaluation demonstrates how AmeriCorps national service programs benefit communities and the members who serve – both quantitatively and qualitatively. From a program standpoint, ORE evidence offers a measurable impact of volunteering and helps reinforce the value of those programs, as well as shows how volunteers themselves benefit from AmeriCorps programs. AmeriCorps uses these program effectiveness measures to provide grants that train and deploy workers, build infrastructure, educate children, and improve health.



4

## Promoting National Service Program Expansion

By expanding the body of evidence and infusing data into the program life cycle, ORE promotes more informed decision making that helps AmeriCorps determine which programs can be replicated and scaled, resulting in more efficient and effective programs deployed nationwide. AmeriCorps also shares ORE's evidence with the federal government, non-governmental organizations, and other stakeholders to enhance their understanding of AmeriCorps programs and volunteering in general. Those entities rely on ORE's evidence to inform legislation, change perceptions, and grow the passion for volunteerism and service.



## Learn More About ORE

For more information about the Office of Research and Evaluation, its resources and reports, and to see what's new, visit the website at [americorps.gov/research-evaluation](https://americorps.gov/research-evaluation).

To stay current on the latest ORE activities and updates, subscribe to the newsletter at [americorps.gov/researchnewsletter](https://americorps.gov/researchnewsletter).